

## BT9126S

NO.	DESCRIPTION	NO.	DESCRIPTION	NO.	DESCRIPTION
1	GEAR CASE ASSY	33	SCREW M5X20	65	SCREW M5X30
2	STOP RING	34	NUT M5	66	CABLE COMP
3	STOP RING	35	CLUTCH COMP	67	TUBE
4	BEARING 6000Z	36	CLUTCH DRUM COMP	68	STOP BUTTON COMP
5	PINION	37	STOP RING	69	HAND GRIP
6	STEEL PLATE	38	BEARING 6202	70	SPRING
7	CAPSCREW M5X20	39	STOP RING	71	BOX LEFT
8	WASHER	40	UNKER	72	NYLON CUTTER HAND
9	SCREW M5X20	41	RUBBER COVER	73	CASE
10	BOLT M6X12	42	SCREW M5X25	74	LEFT NUT
11	WASHER	43	WASHER	75	WASHER
12	GEAR CASE	44	WASHER	76	SPRING
13	BLADE COVER	46	CLAMP	77	NYLON CORD
14	BEARING 6000Z	47	WIRE CLAMP BAND	78	CORD HOLDER
15	GEAR	48	HARNESS ASSY	79	PLATEN
16	SHAFT	49	BOLT M5X25	80	COVER
17	BEARING6002	50	CAPLOWER	81	BRACKET
18	STOP RING	51	BRACKET	82	SCREW M5X30
19	HOLDER	52	HANDLE	83	SAFETY GUARD
20	HOLDER	53	GRIP LEFT	84	WASHER
21	HOLDER	54	CAP OPPER	85	SCREW M5X16
22	LEFT NUT	55	HANDLE	87	GUARD
24	3T BLADE	56	LEVER ASSY	88	BLADE
25	PIPE COMP	57	SCREW ST2.9X13	89	GUARD ASSY
26	M5X12 BOLT	58	BUTTON	90	DOWN CLAMP
27	OIL BEARING	59	SPRING	91	HANDLE HOLDER ( BASE)
28	DRIVE SHAFT	60	CLOCK PIN	92	M5X15 BOLT
29	PIPE	61	HAND GRIP	93	HANDLE HOLDER ( COVER)
30	HOLDER ASSY	62	SPRING	94	M5X35 BOLT
31	HARNESS CLAMP	63	BOX RIGHT	95	THUMB SCREW
32	CLAMP	64	SCREW ST2.9X18	96	NUT

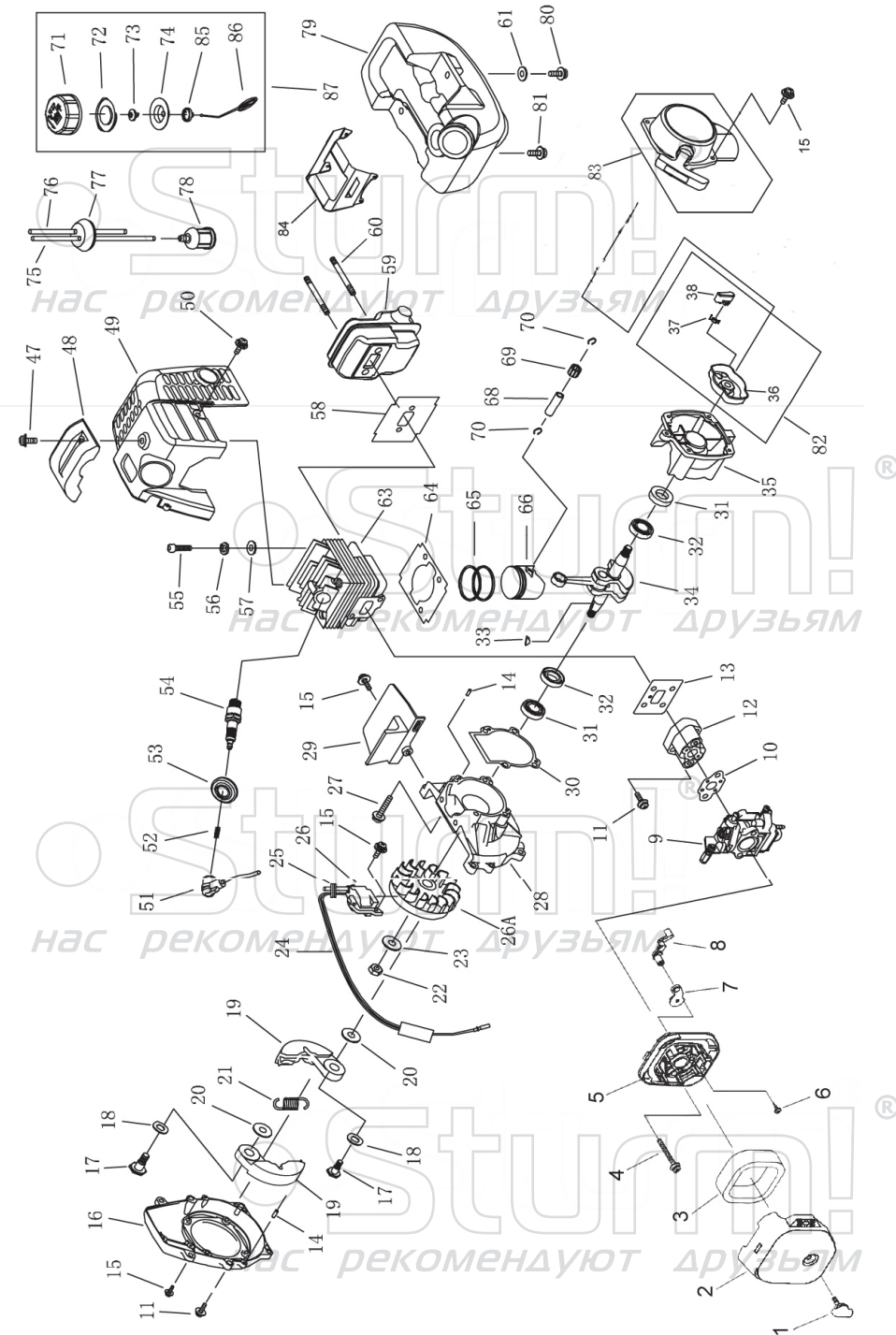
RU-ST20160922



## ENGINE FOR BT9126S

NO.	DESCRIPTION	NO.	DESCRIPTION	NO.	DESCRIPTION
1	SCREW	29	GUIDE PLATE	69	NEEDLE BEARING
2	CLEANER OUTSIDE COVER	30	CRANK CASE GASKET	70	PISTON PIN CIRCLER
3	CLEANER ELEMENT	31	OIL SEAL	71	FUEL TANK LID
4	SCREWM5X55	32	BALL BEARING 6001	72	GASKET
5	CLEANER INSIDE COVER	33	KEY	73	AIRINLET MOUTH
6	SCREW ST4.2X12	34	CRANK SHAFT COMP	74	INSIDE COVER
7	CHOKE	35	REAR HALF CRANK CASE	75	OUTLET FUEL PIPE
8	CHOKE HANDER	36	STARTER PULEY ASSY	76	INLET FUEL PIPE
9	CARBURETOR	37	STARTER PAWL SPRING	77	PRIMARY CORD GROMMET
10	GASKET	38	STARTER PAWL	78	CLEANER
11	SCREW M5X20	47	SCREWM5X14	79	FUEL TANK
12	INLET MANIFOLD	48	COVER	80	SCREW M5X16
13	CYLINDER WASHER	49	COVER	81	SCREW M5X16
14	PIN	50	SCREWM4X12	82	STARTER PULLEY ASSY
15	SCREW M4X16	51	PLUG CAP	83	STARTER
16	FAN COVER	52	CUCK SPRING	84	BACKET
17	CLUTCH STEP SCREW	53	PLUG COVER	85	LID
18	WASHER	54	SPARK PLUG	86	CHAIN
19	CLUTCH SHOE COMP	55	SCREWM5X20	87	FUEL TANK LID COMP
20	WASHER	56	WASHER		
21	CLUTCH SPRING	57	WASHER		
22	NUT M8	58	GASKET		
23	WASHER	59	MUFFER COMP		
24	STOP CORD GROMMET	60	BOLT		
25	PRIMARY CORD GROMMET	63	CYLINDER		
26	MAGNETO STATOR	64	CYLINDER WASHER		
26A	MAGNETO ROTOR	65	PISTON RING		
27	SCREW M5X25	66	PISTON		
28	FRONT HALF CRANK CASE	68	PISTON PIN		

RU-ST20160922



Sturm!  
нас рекомендуют друзья